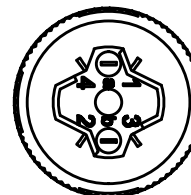
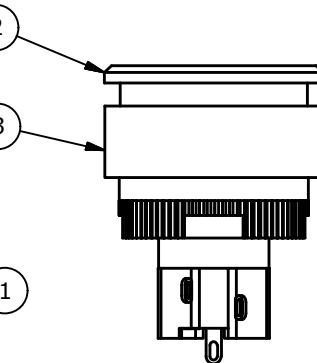
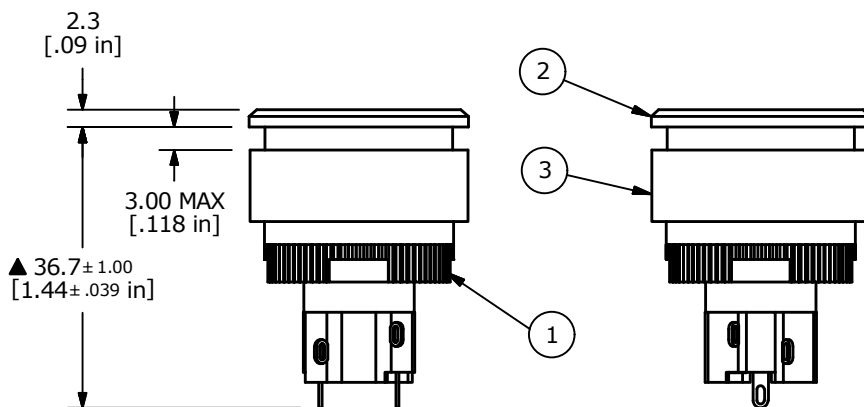


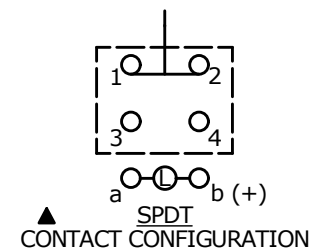
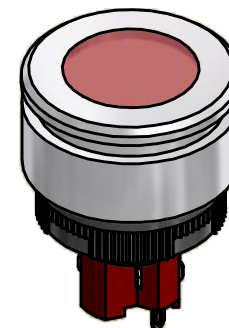
RECOMMENDED PANEL MOUNTING

NOTES:

1. ALL DIMENSIONS IN MM [INCH].
2. GENERAL TOLERANCE: 0.0±0.4
0.00±0.25
3. TERM. NOS. FOR REF. ONLY.
4. RATING: 5A @250VAC
8A @125VAC
.2A @250VDC
6A @24VDC
5. INSULATION: 1,000 MΩ MIN.
6. DIELECTRIC STRENGTH: 2000V FOR 1 MIN.
7. SEALED TO IP65.
8. TRAVEL: 3.0MM FULL TRAVEL, MOMENTARY
9. ELECTRICAL LIFE: >50,000 CYCLES
10. OPERATING TEMP: -25C TO +55C
11. PANEL THICKNESS: 0.5MM TO 3.0MM
12. ▲ DENOTES CRITICAL PARAMETER.
13. 2002/95/EC (ROHS) COMPLIANT



▲ Parts List				
ITEM	QTY	PART NUMBER	DESCRIPTION	
1	1	F060606	LASOAV11 BODY	
2	1	F051704	V3 FLUSH MOUNT BEZEL	
3	1	F051705	V3 FLUSH MOUNT RETAINER	
4	1	F060204	25MM RED LENS	
5	1	F050417	LED 6V DC RED	



TITLE LASOAV31HREDRED

A	21863	RELEASED FOR PRODUCTION	6/4/15	MW
REV	PCR NO	DESCRIPTION	DATE	BY

SCALE	DATE	DR	DWG	REV
1 : 1	6/4/2015	MW	XF0900P	A

THE INFORMATION CONTAINED IN THIS DOCUMENT IS PROPRIETARY TO E-SWITCH AND IS NOT TO BE COPIED OR TRANSFERRED